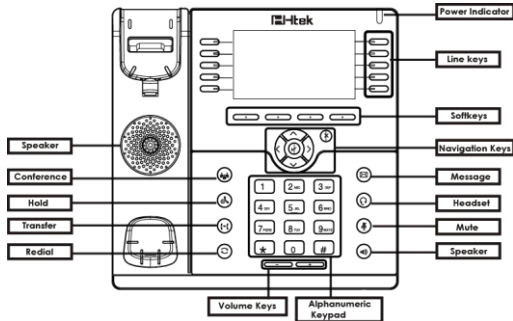


Hardware Overview



LED

Power Indicator: Steady green when power on, Blinking red when there are new messages.

Line Keys: **Steady green:** During the conversation, or plan to dial a call.

Blinking red: The call is ringing.

Off: Idle interface.

Place a call

Three ways to make a call:

Handset: Pick up the handset; enter the number, then press the send soft key or press **#**.

Speaker: Press **[Speaker]** or the line keys; enter the number, then press the send soft key or press **#**.

Headset: Press **[Headset]**; enter the number, then press the send soft key or press **#**.

Note:

You can also use **Contacts** or **call log** to dial the number you want, press dial key and place the call by the three ways mentioned. More, you can also alternate the mode during the call.

End a call

To end a call in three different modes:

Handset: Hang up the handset or press the cancel soft key.

Speaker: Press **[Speaker]**, or press the cancel soft key.

Headset: Press the cancel soft key.

Answer a call

Handset: Pick up the handset.

Speaker: Press **[Speaker]**.

Headset: Press **[Headset]**.

Note: You can also reject the call by press the Reject soft key.

Redial

Press **[Redial]** to redial the last call that dialed.

Hold

Press **[Hold]** the hold soft key during a call to hold the call.

Press **[Resume]** resume soft key to resume the call.

Call Transfer

Blind Transfer

1) Press **[Transfer]** transfer soft key during the conversation, the call is on hold now.

2) Enter the number that transfers to.

3) Press **[Transfer]** the transfer soft key and now the blind transfer completed.

Attended Transfer

1) Press **[Transfer]** transfer soft key during the conversation, the call is on hold now.

2) Enter the number that transfer to and press the send soft key or **#**.

3) Start the second conversation, press **[Transfer]** or transfer soft key, then transfer completed.

Semi-Attended Transfer

1) Press **[Transfer]** transfer soft key during the conversation, the call is on hold now.

2) Enter the number transfer to, and then press **#**, then you can hear the ring tone.

3) Press **[Tran]** or the Tran soft key and now the Semi-attended transfer completed.

Call Conference

Assuming that A and B are in conversation. A wants to bring C (or D & E) in a conference:

1) A press Hold, the call is placed on hold.

2) A press New Call, enter the number of C and then press send soft key or , C answers the call.

3) A press **[Conf]** or the conference soft key, then A, B and C are now in a conference.

4) If add D&E, A press Hold, the current conference is on hold, press New Call and dial D, D answer the call. A Press Hold and New Call and dial E, E answer the call. A press , then A,B,C,D,E are in conference.

Note:

1) If C does not answer the call, A can back to continue the conversation with B;

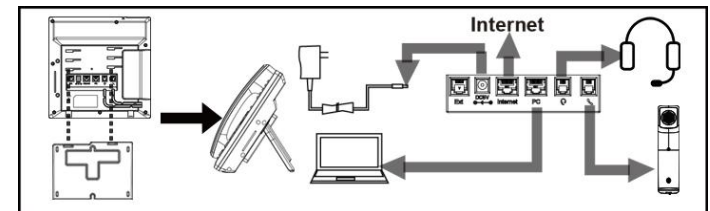
2) Once A hangs up the call, the conference ends, while if B or C drops the call, A&C or A&B conversation continues.

Call Mute

Press **[Mute]** to mute the microphone during the call.

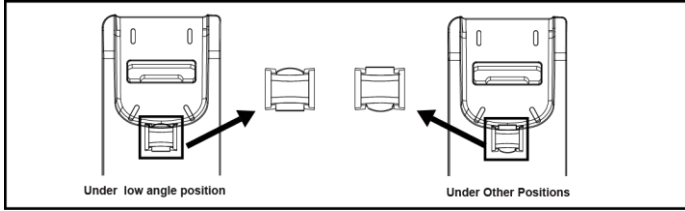
Press **[Mute]** again to un-mute the conversation.

Instruction



Notice

When you want to change from the low angle position to another positions.
Please take out the hook switch then rotate it 180 degrees then slide it back into its groove.



IP Phone

Configuration

Configuration via Phone

- 1) Press Menu → Setting → Advanced Settings (Default password: admin)
- 2) Select Network: To configure the Wan Port (DHCP/Static/PPPoE), PC Port etc.
- 3) Select Accounts: Enable the account, fill in the SIP Server, Outbound Proxy and the SIP registration information.

Configuration via Web

- 1) Get the IP address from the phone: Press Menu→ Status-> Information.
- 2) Login: Input the IP address in the web browser. The PC and phone should be in the same IP address segment (Login name: admin ; Default password: admin).
- 3) Configuration: Fill in the SIP Server info on the Profile page and the Account registration info on the Account page.
- 4) Click on SaveSet and Restart the Phone if needed.

FCC Statement

1. This device complies with Part 15 of the FCC Rules. Operation is subject to the following two conditions:

- (1) This device may not cause harmful interference.
- (2) This device must accept any interference received, including interference that may cause undesired operation.

2. Changes or modifications not expressly approved by the party responsible for compliance could void the user's authority to operate the equipment.

NOTE: This equipment has been tested and found to comply with the limits for a Class B digital device, pursuant to Part 15 of the FCC Rules. These limits are designed to provide reasonable protection against harmful interference in a residential installation. This equipment generates uses and can radiate radio frequency energy and, if not installed and used in accordance with the instructions, may cause harmful interference to radio communications. However, there is no guarantee that interference will not occur in a particular installation. If this equipment does cause harmful interference to radio or television reception, which can be determined by turning the equipment off and on, the user is encouraged to try to correct the interference by one or more of the following measures:

Reorient or relocate the receiving antenna.

Increase the separation between the equipment and receiver.

Connect the equipment into an outlet on a circuit different from that to which the receiver is connected.

Consult the dealer or an experienced radio/TV technician for help.



Quick Reference For UC926